

PIPELINEMAN

PMHZ

PAY WELDER

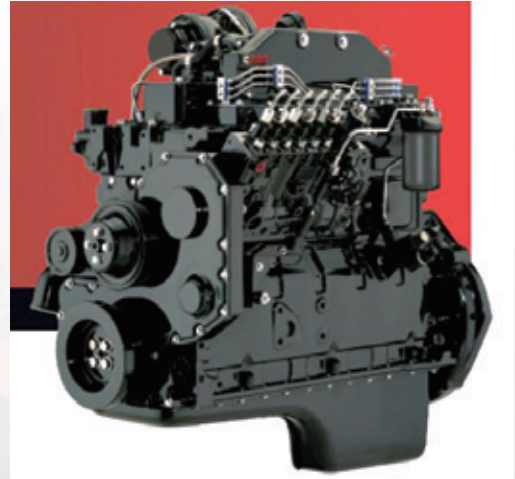
| | |
|------------------|---------------------|
| Rated power | 127/132 KW |
| Lifting capacity | 3200/5800 KG |
| Platform area | 8-10 M ² |



PMHZ paywelder

ENGINE

Equipped the Cummins 6BTA5.9-C series diesel engine, high quality and easy maintenance, ensuring sustained power output for the welding procedure demand. Enlarge cooling system and cold area starter device can be install while using in the tropical or frozen area.



HYDRAULIC SYSTEM

American Sauer hydraulic system is installed in the equipment for power both the traveling of tractor and crane operation. Pump is directly connected to the drive train after the engine.

UNDERCARRIAGE

Hydrostatic driven gives enough power for traveling on even more grade slope of the work site, track counter rotation on the spot give more maneuverable operation of the tractor, high ground clearance and low ground pressure allows working in any type of tough ground conditions.



INTRODUCTION

PLATFORM

Vast capacity of platform for carrying all types of welding equipment onto the platform for the pipeline welding work convenience.



ENCLOSED CABIN

Big room space, max glass area gives the operator comfortable operating condition. Lever controls of both the traveling and crane in the cabin, safety switch equipment at the side of the driver's seat to prevents tractor from running during the generating work.



CRANE

The HIAB serials hydraulic crane is mounted onto the tractor for lifting the welding tent and other welding accessories. Crane operation can be arranged both inside and outside the cabin.

Automatic welding system pay welder



With telescope crane back of cabin



With knuckle boom in front of cabin



With knuckle boom back of cabin

OVERALL DIMENSIONS

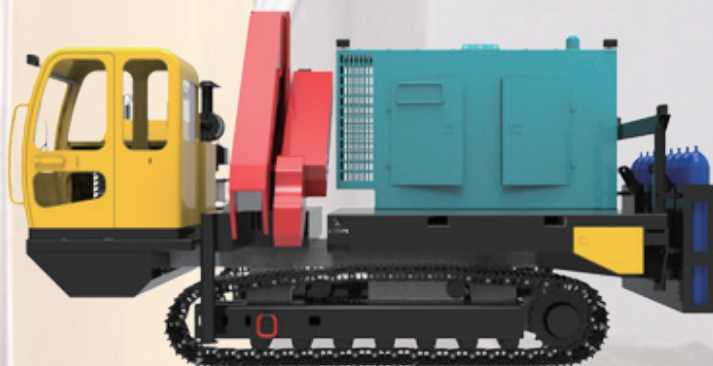
Model I



Model II



Model III



Optional equipment



Air compressor for site cleaning or pneumatic internal clamp inflation



Generating set for the power of automatic welding system unit



Hydraulic operative racks for shielding gas cylinders



Phonix brand electrode oven for drying welding stick on site



The carrier for all type of Automatic welding machine unit

SPECIFICATIONS

| MODEL | PMHZ80 | PMHZ150 |
|---------------------------------------|---|-----------------------|
| ENGINE | | |
| Model | Cummins 6BTA5.9-C170 | Cummins 6BTA5.9-C180 |
| Rated power@rated speed | 127KW@2000 RPM | 132KW@2100 RPM |
| Number of cylinders | 6 | 6 |
| Electrical system | 24 V | 24 V |
| Starter | 6.6KW / 8.25 HP | 6.6KW / 8.25 HP |
| Displacement | 5.9 L | 5.9 L |
| HYDRAULIC SYSTEM | | |
| Make | Danfoss | Danfoss |
| Pump output – max | 220 l/min | 270 l/min |
| Working pressure | 29000 kpa | 29000 kpa |
| Crane pump output | 35 l/min | 90 l/min |
| Working pressure | 20000 kpa | 30000 kpa |
| CRANE | | |
| Model | HIAB ST083-032 | HIAB 111B-2 |
| Lifting capacity | 3200kg | 5800kg |
| Max. reach with(hyd.telescopes) | 7.8m | 8m |
| Rotation form | 360°motor rotation | 410°cylinder rotation |
| Operation | Inside the cabin | |
| UNDERCARRIAGE | | |
| Width of standard shoes | 600 mm | 600 mm |
| Length of track on ground | 2760 mm | 3100 mm |
| Track gauge | 1870 mm | 2150 mm |
| Ground clearance | 570 mm | 570 mm |
| Number of track rollers (each side) | 7 | 7 |
| Number of carrier rollers (each side) | 2 | 2 |
| Travel speed(km/h) | low 0~2.9, high 0~4.6 | low 0~4.4, high 0~7 |
| GENERAL SPECIFICATION | | |
| Dimensions—L*W*H | 5850*2470*3050 | 6255*3000*3250 |
| Platform area | 8m² | 10m² |
| Operating weight(without load) | 10T | 13T |
| Operating temperature | -40℃~55℃ | -40℃~55℃ |
| OPTIONAL EQUIPMENT | | |
| Generating set | Stamford worked by Cummins | |
| Welding machine | Linclon350,400,600.etc. | |
| Air compressor | Ingersoll Rand; 960L/min 12bar or 470L/min 8bar | |
| Electrode oven | Phoenix;5kg or 50kg | |
| Gas bottle rack | 6~8bottles | |

Specifications for reference only and do not constitute a contract!

PMHZ

PAYWELDER

***Make the pipeline welding work
efficient, safely and conveniently.***



GLOBAL PIPELINE EQUIPMENT CO.,LTD.

ADD: NO. 68, DADONG ROAD, DRAGON TOWN INDUSTRIAL AREA, WUQING DISTRICT, TIANJIN, CHINA.

POST CODE: 065000 TEL: + 86 18103361197 / 13603369380

WEBSITE: www.gpe-company.com EMAIL: info@gpe-company.com / sales@gpe-company.com